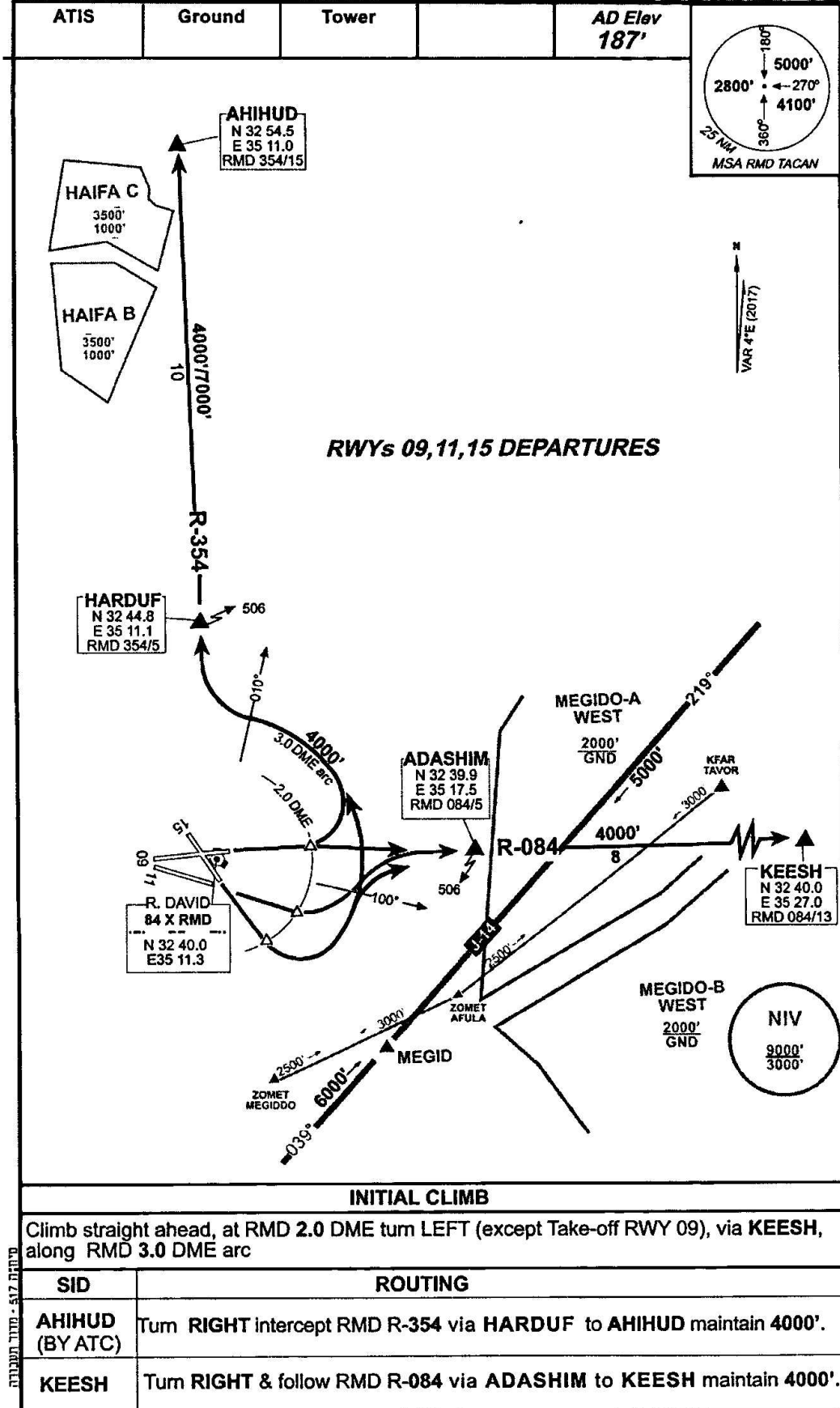


LLRD
RAMAT DAVID

FIGHTER

בנתמ"ט

RAMAT DAVID, ISRAEL
SID AHIHUD, KEESH



JULY 2017

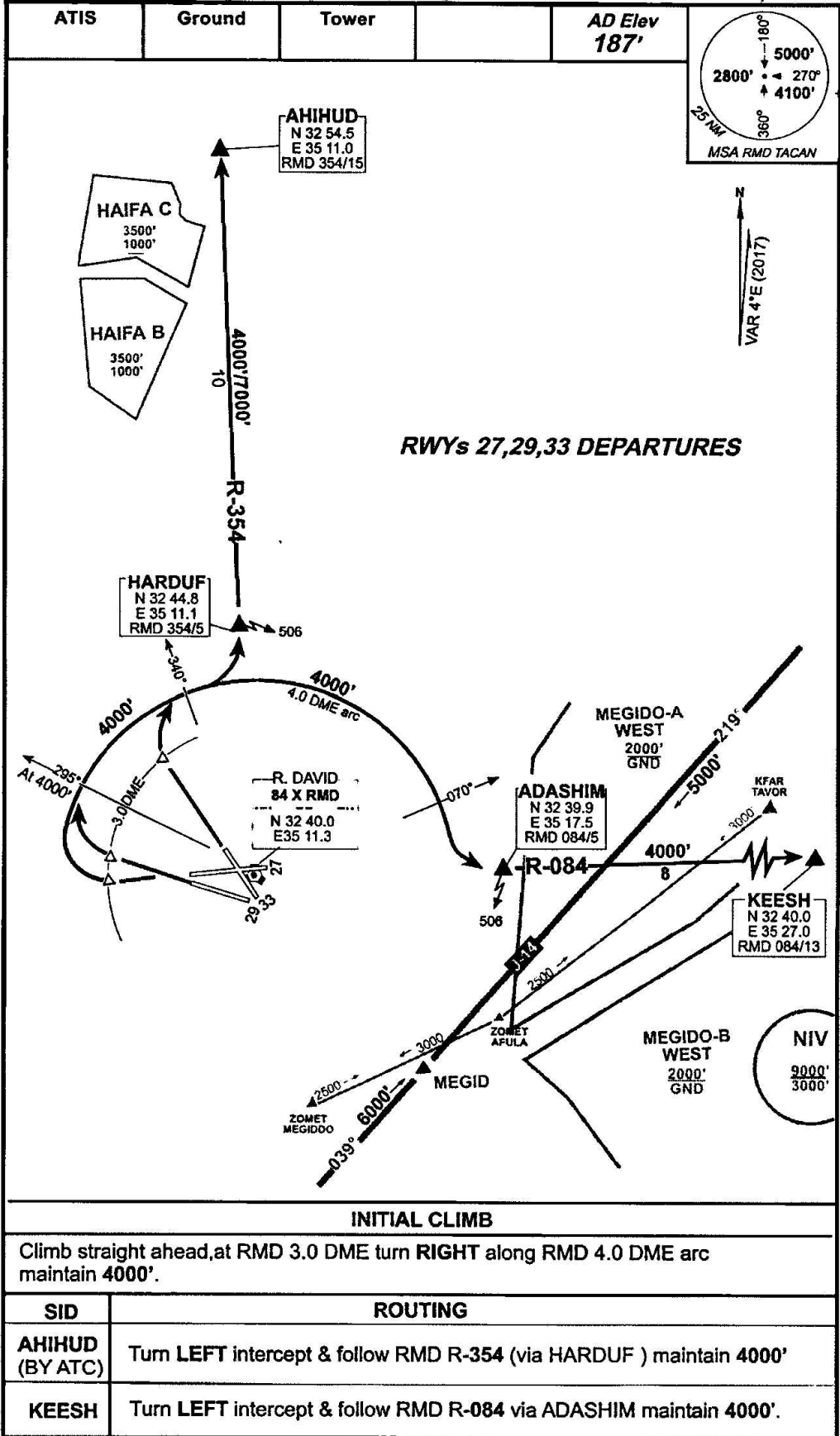
F - 01 - 03

LLRD
RAMAT DAVID

FIGHTER

בלימ"ס

RAMAT DAVID, ISRAEL
SID AHIHUD, KEESH

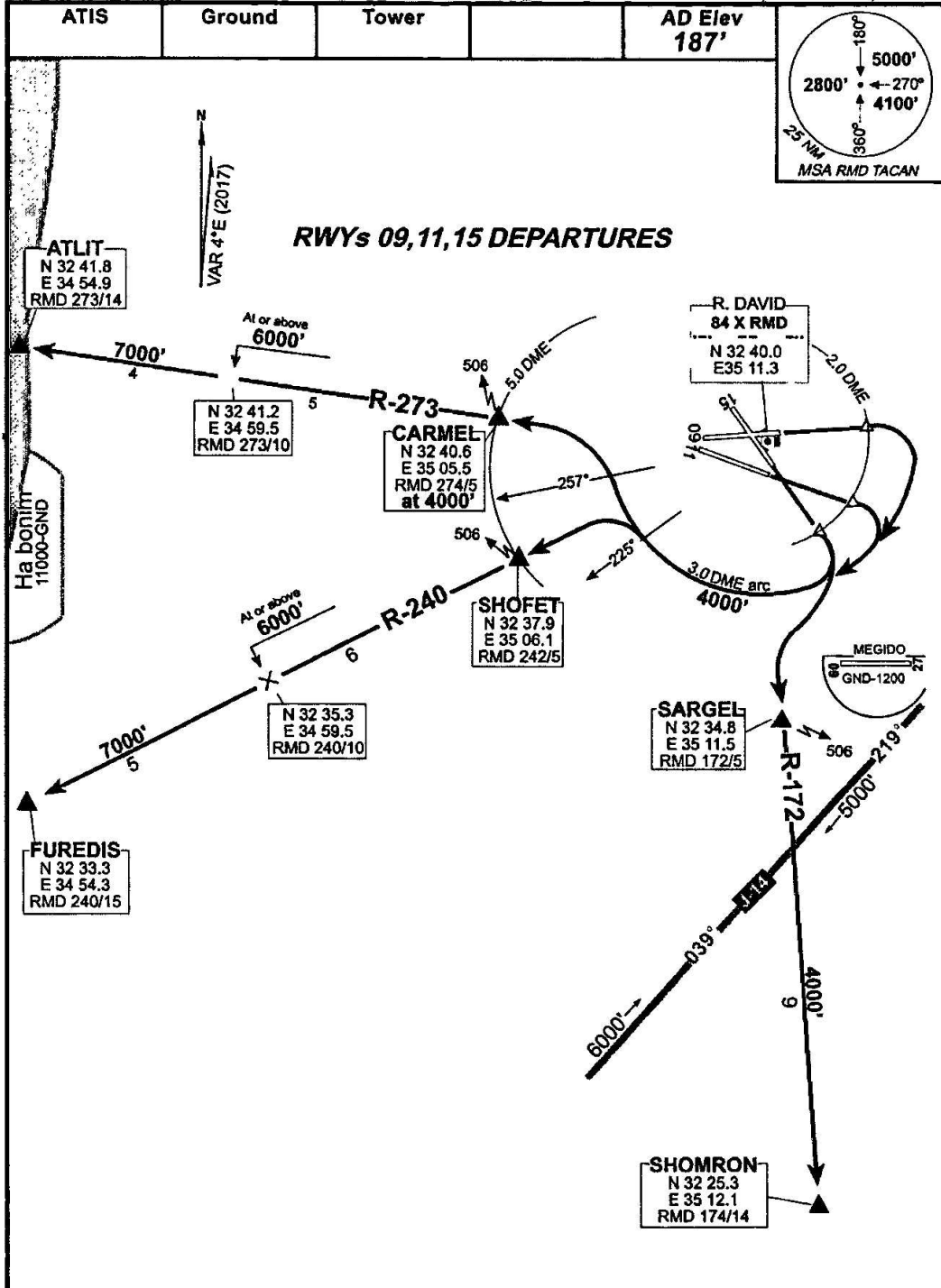


LLRD
RAMAT DAVID

FIGHTER

בלנח"ט

RAMAT DAVID, ISRAEL
SID SHOMRON, FURADIS, ATLIT



INITIAL CLIMB

Climb straight ahead, at RMD 2.0 DME turn RIGHT along RMD 3.0 DME arc maintain 4000', thence...

SID	ROUTING
SHOMRON	Turn LEFT to Intercept & follow RMD R-174, via SARGEL maintain 4000'.
FUREDIS (BY ATC)	Turn LEFT to Intercept & follow RMD R-240, via SHOFET climb to 7000'. Cross RMD 10.0 DME at or above 6000'.
ATLIT (BY ATC)	Turn LEFT to Intercept & follow RMD R-273, via CARMEL climb to 7000'. Cross RMD 10.0 DME at or above 6000'.

JULY 2017

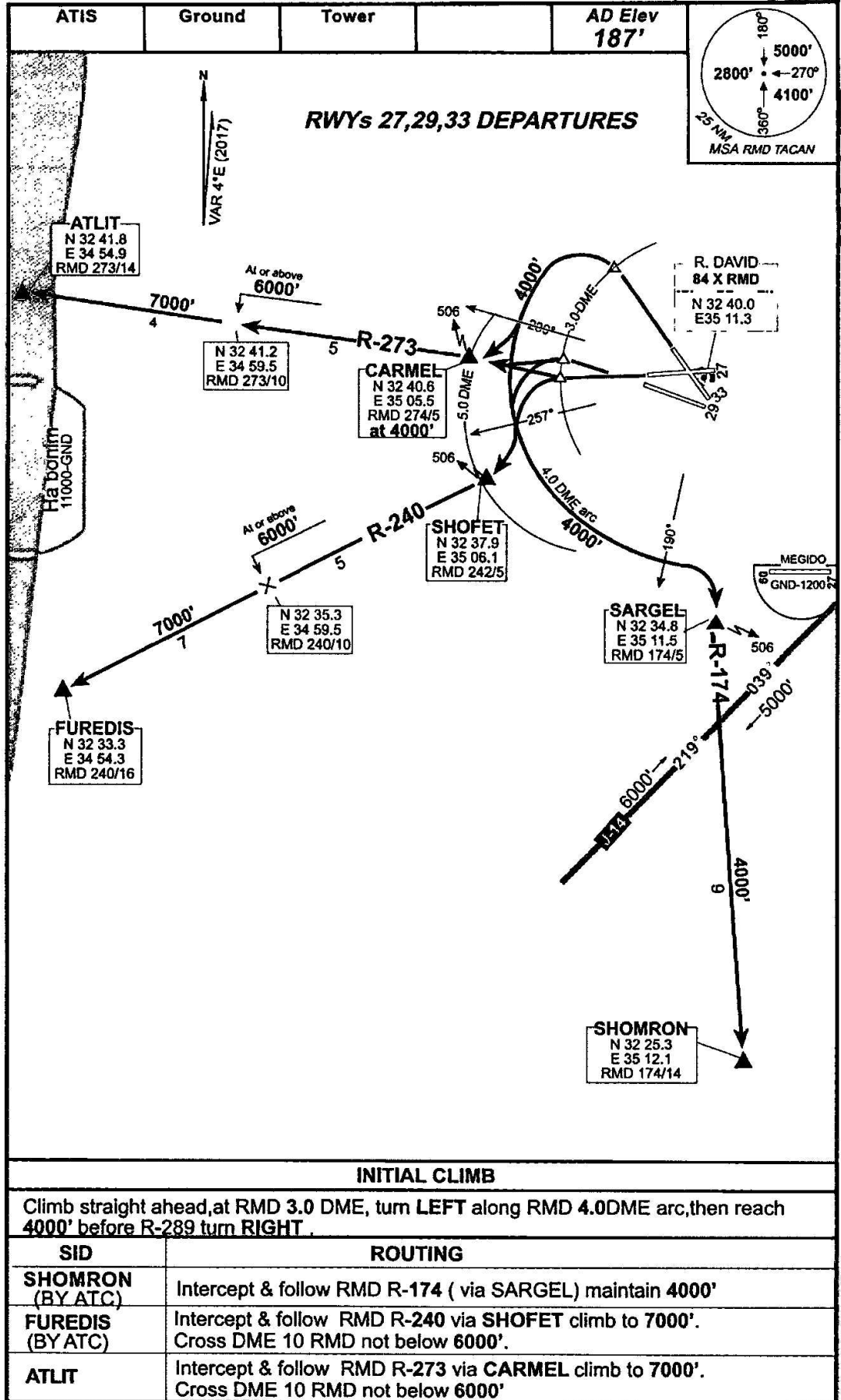
E - 01 - 05

LLRD
RAMAT DAVID

FIGHTER

בל"ט

RAMAT DAVID, ISRAEL
SID SHOMRON, FURADIS, ATLIT



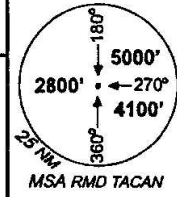
LLRD
RAMAT DAVID

FIGHTER

בלמ"ס

RAMAT DAVID, ISRAEL
SID DELTA **NORTH arc**

ATIS	Ground	Tower	AD Elev 187'
------	--------	-------	-----------------

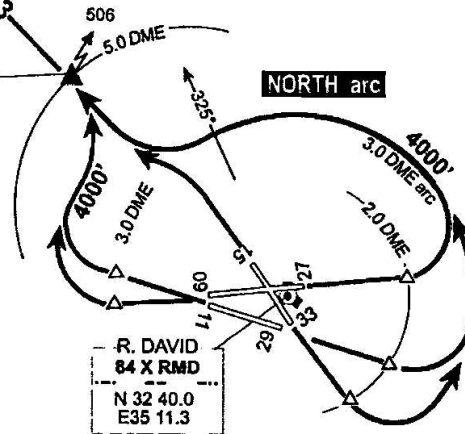


DELTA
N 32 50.3
E 35 00.1
RMD 313/14

ALL RWYs DEPARTURES

VAR 4°E (2017)

HASIDIM
N 32 43.6
E 35 07.3
RMD 313/5
at 4000'



INITIAL CLIMB

RWYs 09, 11, 15	Climb straight ahead, at RMD 2.0 DME, turn LEFT along RMD 3.0 DME arc at 4000', thence...
RWYs 27, 29	Climb straight ahead, at RMD 3.0 DME, turn RIGHT climbing to reach HASIDIM at 4000', thence...
RWY 33	Climb straight ahead to 4000' direct to HASIDIM, thence...

ROUTING

Intercept & follow RMD R-313 via HASIDIM climb to 7000' proceed to DELTA.

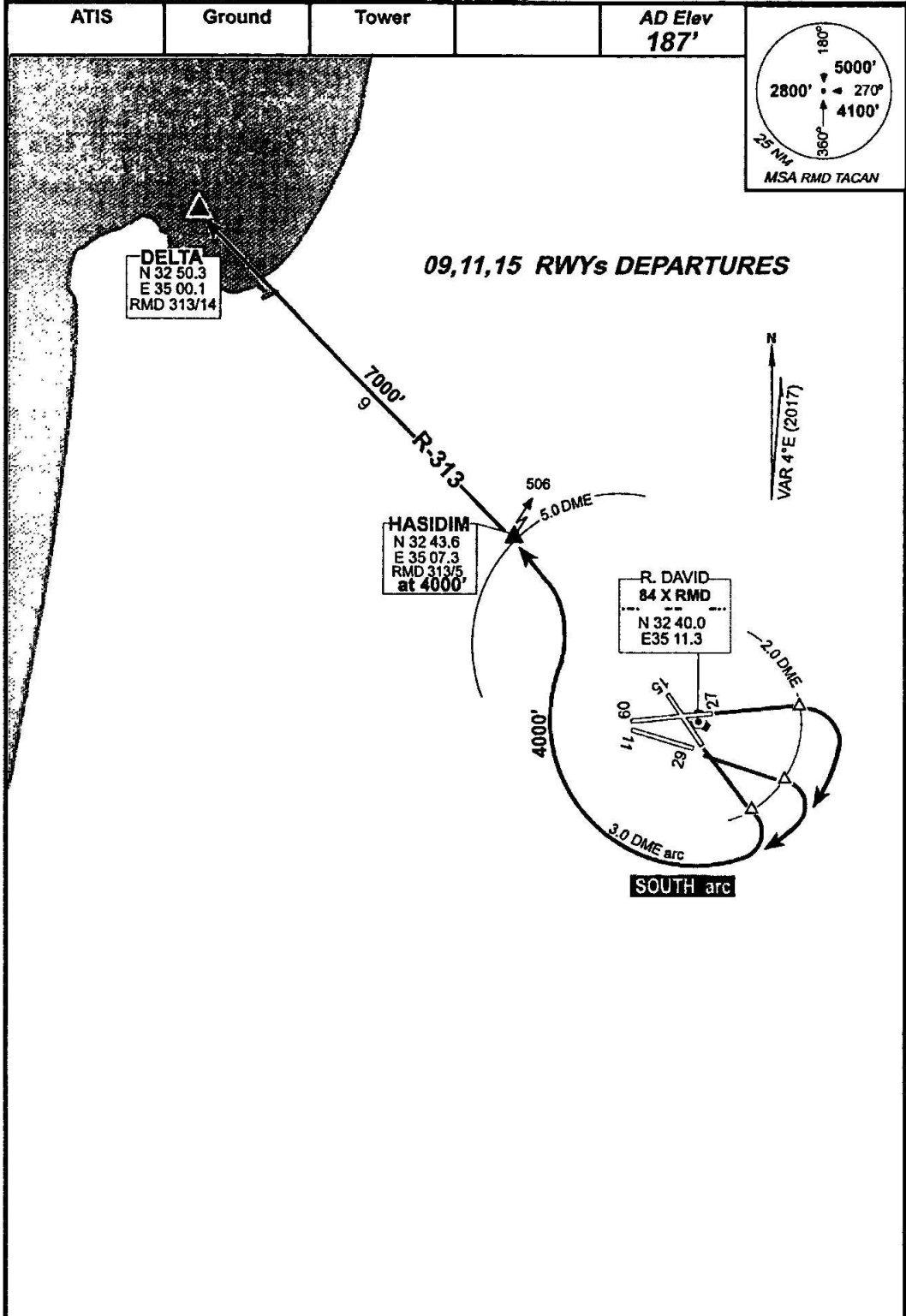
מחזור תכנון - 517

LLRD
RAMAT DAVID

FIGHTER

בלק"ס

RAMAT DAVID, ISRAEL
SID DELTA **SOUTH arc**



INITIAL CLIMB

RWYs 09, 11,15

Climb straight ahead, at RMD 2.0 DME, turn RIGHT along RMD 3.0 DME arc at 4000', thence...

ROUTING

Intercept & follow RMD R-313 via **HASIDIM** climb to 7000' proceed to **DELTA**.

0712000Z JUL17 - 0177000Z

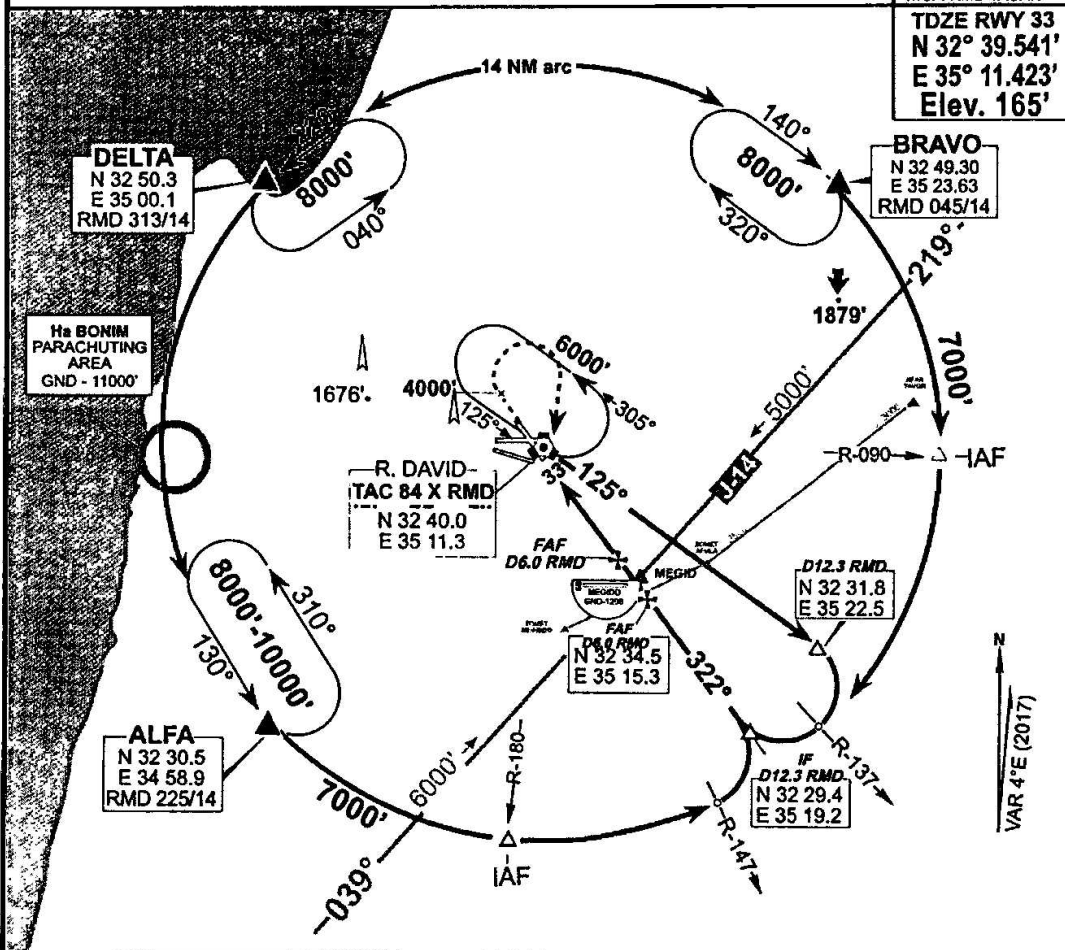
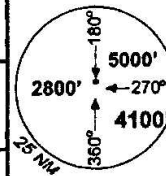
LLRD
RAMAT DAVID

FIGHTER

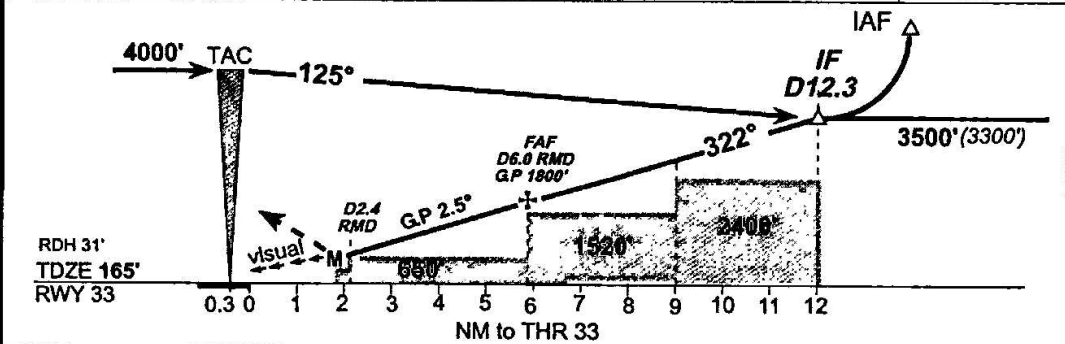
ס"מלך

RAMAT DAVID, ISRAEL
TAC Rwy 33

ATIS		Approach	Tower	Ground	AD Elev 187'
Final APCH CRS 322°		FAF D6.0 RMD 1800'	TAC DA(H) 765' (600')		TAC 84X RMD
MISSED APCH: Climb straight ahead to 4000', then follow ATC instructions.					



RMD TAC DME	2.4	4.0	6.0	8.0	10.0
ALT (H)	770' (605')	1180' (1015')	1800' (1635')	2300' (2135')	2800' (2635')
THR RWY 33	2.1	3.7	5.7	7.7	9.7



GND speed - KTS	180	210	240		
Rate of descent-FPM	800	930	1065		
Straight - in Landing RWY 33			Circle to land		
DA (H) 770' (605')			MAX 200 KTS		
VIS 4200m			MDA (H) 1120' (933')		
			VIS 6500m		

JULY 2017

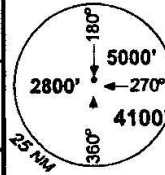
LLRD
RAMAT DAVID

FIGHTER

בלמ"ס

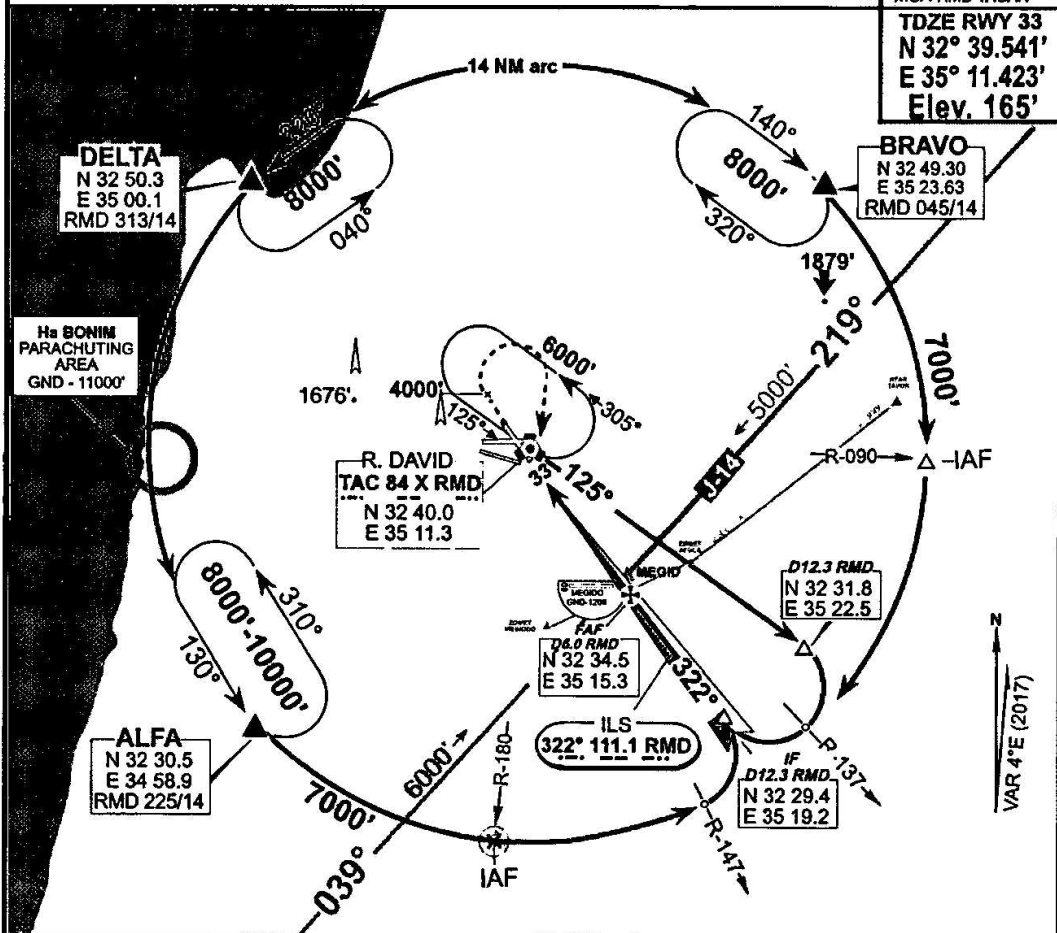
RAMAT DAVID, ISRAEL
ILS Z Rwy 33

ATIS		Approach	Tower	Ground	AD Elev 187'
LOC RMD 111.1	Final APCH CRS 322°	FAF D6.0 RMD 1800'	ILS DA(H) 465' (300')	TAC 84X RMD	

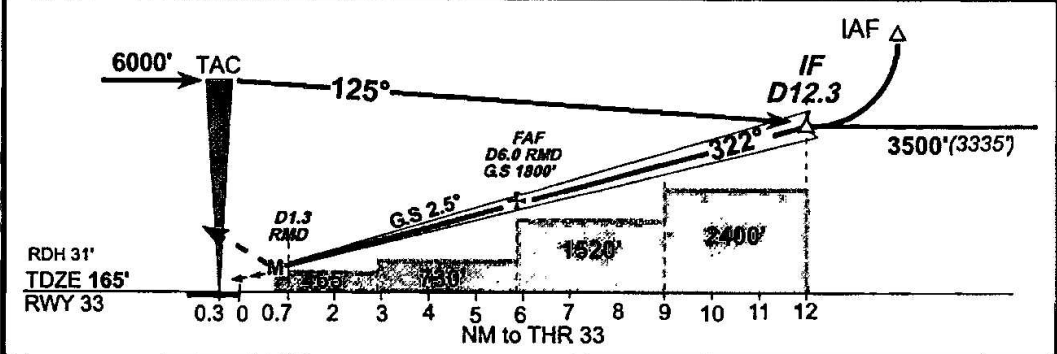


MISSED APCH: Climb straight ahead to 4000', then follow ATC instructions.

MSA RMD TACAN
TDZE RWY 33
N 32° 39.541'
E 35° 11.423'
Elev. 165'



LOC	RMD TAC DME	2.0	4.0	6.0	8.0	10.0
G.S OUT	ALT(H)	650' (485')	1180' (1015')	1800' (1635')	2300' (2135')	2800' (2635')
THR RWY 33		1.7	3.7	5.7	7.7	9.7



GND speed - KTS	180	210	240	4000'	4000'
Rate of descent-FPM	800	930	1065	↑	↻

Straight - in Landing RWY 33			Circle to land		
ILS DA (H) 470' (305') VIS 2100m	LOC (G.S. OUT) DA (H) 770' (605') VIS 4200m	MAX 200 KTS	MDA (H) 1120' (933') VIS 6500m		